



Series Sponsor



iseee
Institute for Sustainable Energy,
Environment and Economy



5TH ANNUAL ISEEE DISTINGUISHED SPEAKER SERIES

ENERGY SYSTEMS 2030+: TRANSFORMING NORTH AMERICA'S ENERGY SYSTEMS

...UNIQUE INSIGHTS FROM LEADING GLOBAL EXPERTS

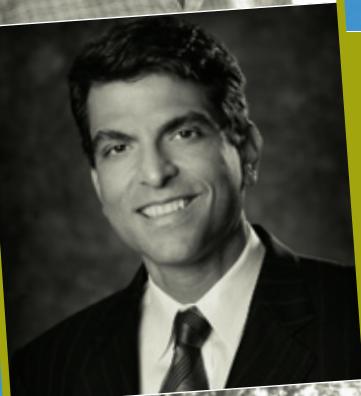


October 29, 2009 – Robert Socolow

Professor of Mechanical and Aerospace Engineering

• Co-leader of Carbon Mitigation Initiative • Princeton University • Princeton, New Jersey

“Technology, Policy and Values for Living in a ‘Greenhouse’”



November 19 – Jason Grumet

Executive Director, National Commission on Energy Policy • former top adviser on Energy and Environment for Obama presidential campaign • Washington, D.C.

“A Practical Roadmap for America”



January 14, 2010 – Lowell Wood

Research Fellow • Recipient of Lawrence Prize of the U.S. Department of Energy • Hoover Institution • Stanford University • Palo Alto, California

“Early 21st Century Energy Systems: Challenges and Prospects”



February 11 – Daniel G. Nocera

Henry Dreyfus Professor of Energy • Time Magazine's 100 Most Influential People in the World • Massachusetts Institute of Technology • Cambridge, Massachusetts

“Personalized Energy for 1 (x6 Billion)”



March 11 – Ken Calderia

Chemical Oceanographer • Author of “America's Climate Choices”

• Department of Global Energy • Carnegie Institution for Science • Washington, D.C.

“Geoengineering: Can intentional intervention in the climate system really reduce climate risk?”

Free and open to the public. Refreshments provided.

WHERE: University of Calgary, MacEwan Hall ballroom (3rd floor)

U of C campus map: <http://www.ucalgary.ca/map/index.html>

WHEN: All talks start at 7:30 p.m. Doors open 7:20 p.m.

TO RESERVE YOUR SEAT(S) BEFORE EACH TALK REGISTER ONLINE AT

<https://netcommunity.ucalgary.ca/SSLPage.aspx?pid=1842>

OR CALL 403.210.9786 | FOR MORE INFORMATION VISIT www.iseee.ca

ISEEE INITIATIVES ARE DEVELOPED IN COLLABORATION WITH U OF C FACULTIES AND SCHOOLS

FACULTY OF ENVIRONMENTAL DESIGN | HASKAYNE SCHOOL OF BUSINESS | FACULTY OF LAW
SCHULICH SCHOOL OF ENGINEERING | FACULTY OF SCIENCE | FACULTY OF SOCIAL SCIENCES